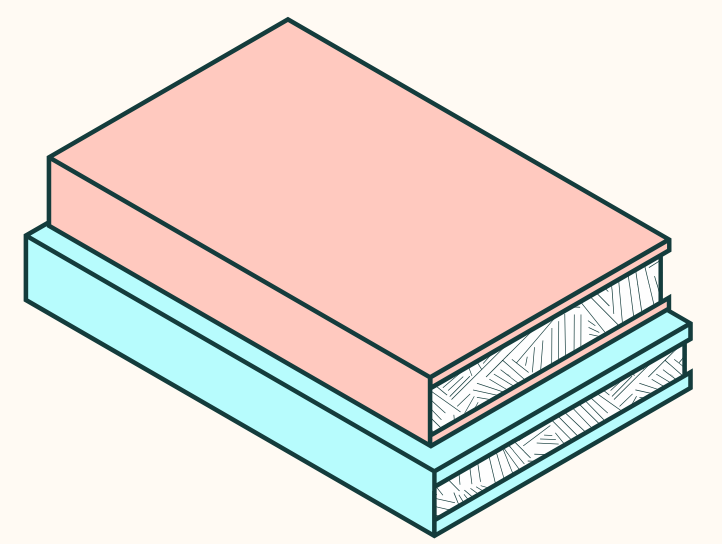
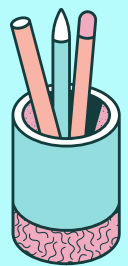


WORD CLASSES



There are different classes of words, sometimes called 'parts of speech'. The word come is a verb, letter is a noun, and great is an adjective.



Nouns

Words that name people, places, things or ideas.

E.g. dog, child, pencil, war, Thursday

Adjectives

Words that describe the qualities of a noun.

E.g. kind, clever, expensive, big



Verbs

Words that describe actions or states of being.

E.g. walk, jump, study, be, seem

Adverbs

Words that modify verbs, adjectives or other adverbs.

E.g. quickly, badly, generally, completely



Pronouns

Words that take the place of nouns.

E.g. me, you, his, it, this, that, mine, yours, who



Prepositions

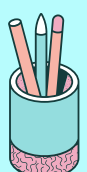
Words usually in front of a noun or pronoun that express a relation to another word.

E.g. after, down, near, of, plus, round, to

Interjections

Words that occur as an utterance on their own to express a feeling or reaction.

E.g. ah, hey, oh, ouch, um, well



Conjunctions

Words that join words, phrases, clauses or sentences

E.g. but, and, yet, or, because, although, since, unless, while



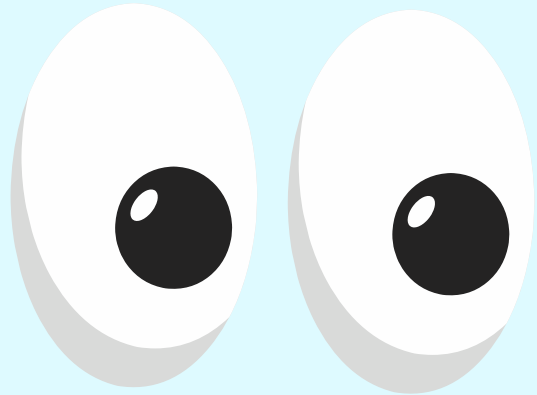
Determiners

Words that come before a noun to introduce it.

E.g. a, an, the, my, his, some, this, both



PARTS OF SPEECH



1

NOUN

It is a word for a person, place, thing, animal, or idea. It can be concrete or abstract and common or proper.

5

PRONOUN

It is a word used in place of a noun. It can be a subject, object, possessive, indefinite, or demonstrative pronoun.

2

VERB

A word or group of words that expresses an action or being. A verb tells what the noun does.

6

ADVERB

It describes or modifies a verb, an adjective, or another adverb but never a noun. It tells where, how, and when. Many adverbs end in -ly.

3

ADJECTIVE

It is a word used to modify or describe a noun or pronoun. It usually answers the question of which one, what kind, or how many.

7

PREPOSITION

It is a word placed before a noun or pronoun to form a phrase modifying another word in the sentence.

4

CONJUNCTION

It joins words, phrases, or clauses, and indicates the relationship between the elements join.

8

INTERJECTION

It is a word used to express emotions. It is often followed by an exclamation point.

